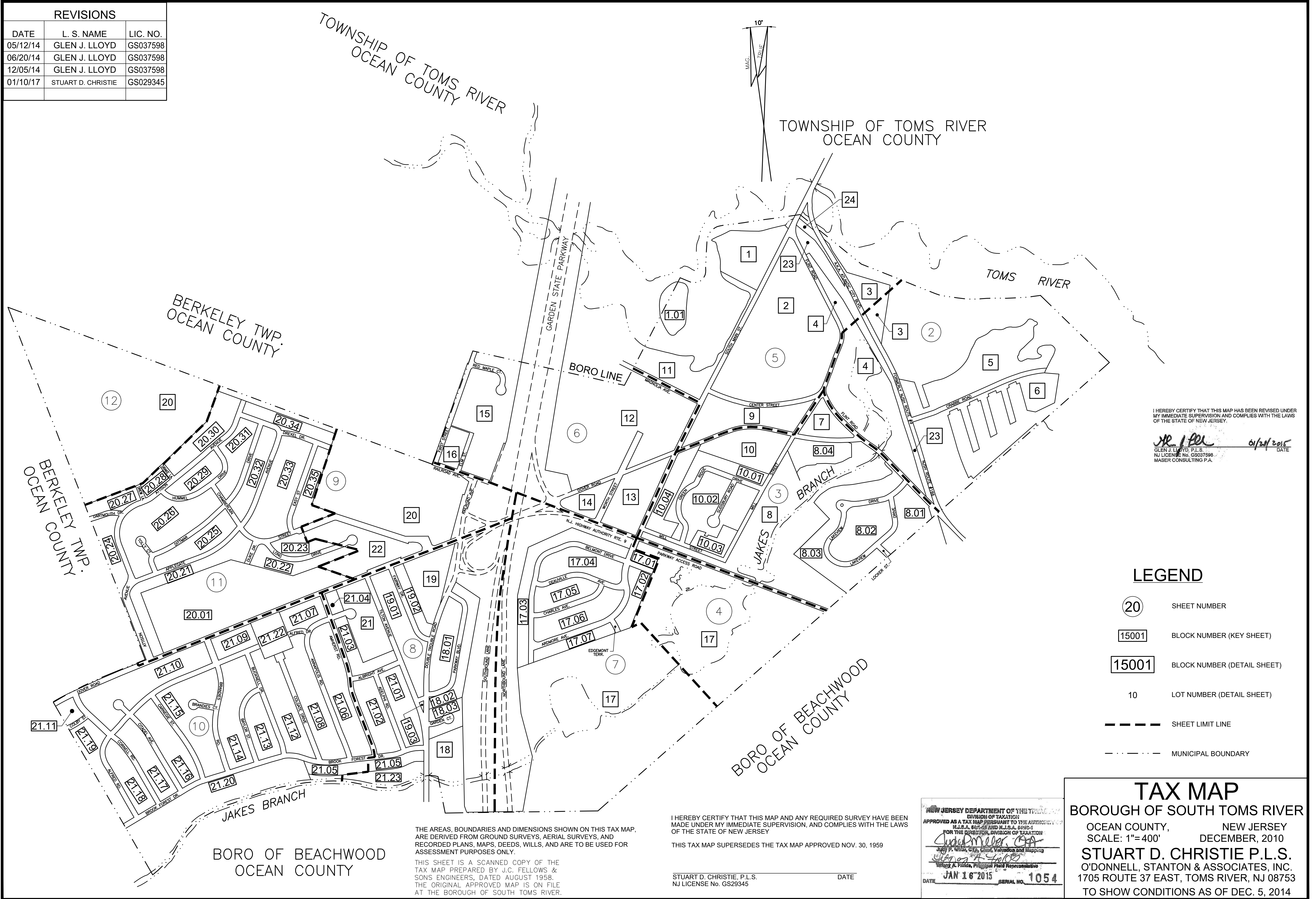


REVISIONS		
DATE	L. S. NAME	LIC. NO.
05/12/14	GLEN J. LLOYD	GS037598
06/20/14	GLEN J. LLOYD	GS037598
12/05/14	GLEN J. LLOYD	GS037598
01/10/17	STUART D. CHRISTIE	GS029345



I HEREBY CERTIFY THAT THIS MAP HAS BEEN REVISED UNDER MY IMMEDIATE SUPERVISION AND COMPLIES WITH THE LAWS OF THE STATE OF NEW JERSEY.

Stuart D. Christie 01/24/2015 DATE
 GLEN J. LLOYD, P.L.S. NJ LICENSE No. GS037598 MASER CONSULTING P.A.

- LEGEND**
- 20 SHEET NUMBER
 - 15001 BLOCK NUMBER (KEY SHEET)
 - 15001 BLOCK NUMBER (DETAIL SHEET)
 - 10 LOT NUMBER (DETAIL SHEET)
 - SHEET LIMIT LINE
 - MUNICIPAL BOUNDARY

THE AREAS, BOUNDARIES AND DIMENSIONS SHOWN ON THIS TAX MAP, ARE DERIVED FROM GROUND SURVEYS, AERIAL SURVEYS, AND RECORDED PLANS, MAPS, DEEDS, WILLS, AND ARE TO BE USED FOR ASSESSMENT PURPOSES ONLY.

THIS SHEET IS A SCANNED COPY OF THE TAX MAP PREPARED BY J.C. FELLOWS & SONS ENGINEERS, DATED AUGUST 1958. THE ORIGINAL APPROVED MAP IS ON FILE AT THE BOROUGH OF SOUTH TOMS RIVER.

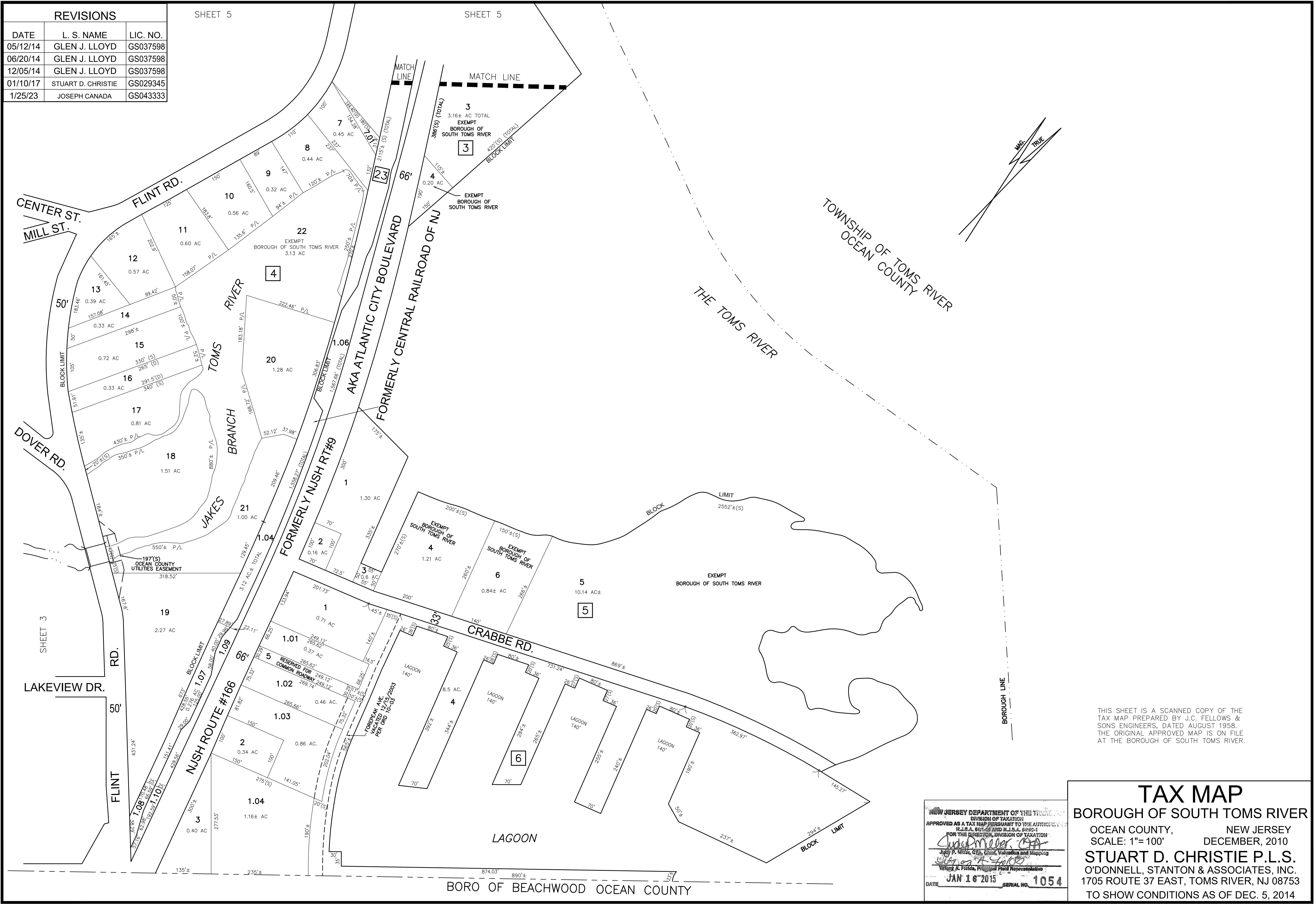
I HEREBY CERTIFY THAT THIS MAP AND ANY REQUIRED SURVEY HAVE BEEN MADE UNDER MY IMMEDIATE SUPERVISION, AND COMPLIES WITH THE LAWS OF THE STATE OF NEW JERSEY

THIS TAX MAP SUPERSEDES THE TAX MAP APPROVED NOV. 30, 1959

STUART D. CHRISTIE, P.L.S. DATE
 NJ LICENSE No. GS29345

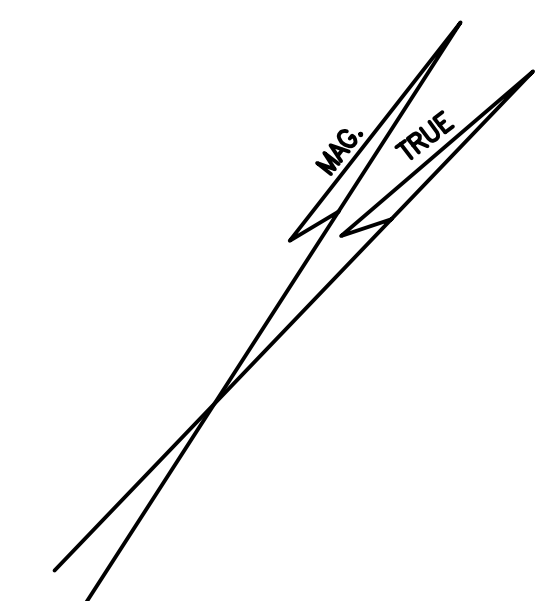
NEW JERSEY DEPARTMENT OF THE TREASURY
 DIVISION OF TAXATION
 APPROVED AS A TAX MAP PURSUANT TO THE AUTHORITY OF
 N.J.S.A. 8:15 AND N.J.S.A. 8:15-1
 FOR THE DEPARTMENT, DIVISION OF TAXATION
Stuart D. Christie
 JAMES P. WILCOX, CPA, Chief, Valuation and Mapping
 William A. Fields, Principal Field Representative
 DATE JAN 16 2015 SERIAL NO. 1054

TAX MAP
 BOROUGH OF SOUTH TOMS RIVER
 OCEAN COUNTY, NEW JERSEY
 SCALE: 1"= 400' DECEMBER, 2010
STUART D. CHRISTIE P.L.S.
 O'DONNELL, STANTON & ASSOCIATES, INC.
 1705 ROUTE 37 EAST, TOMS RIVER, NJ 08753
 TO SHOW CONDITIONS AS OF DEC. 5, 2014



REVISIONS		
DATE	L. S. NAME	LIC. NO.
05/12/14	GLEN J. LLOYD	GS037598
06/20/14	GLEN J. LLOYD	GS037598
12/05/14	GLEN J. LLOYD	GS037598
01/10/17	STUART D. CHRISTIE	GS029345
1/25/23	JOSEPH CANADA	GS043333

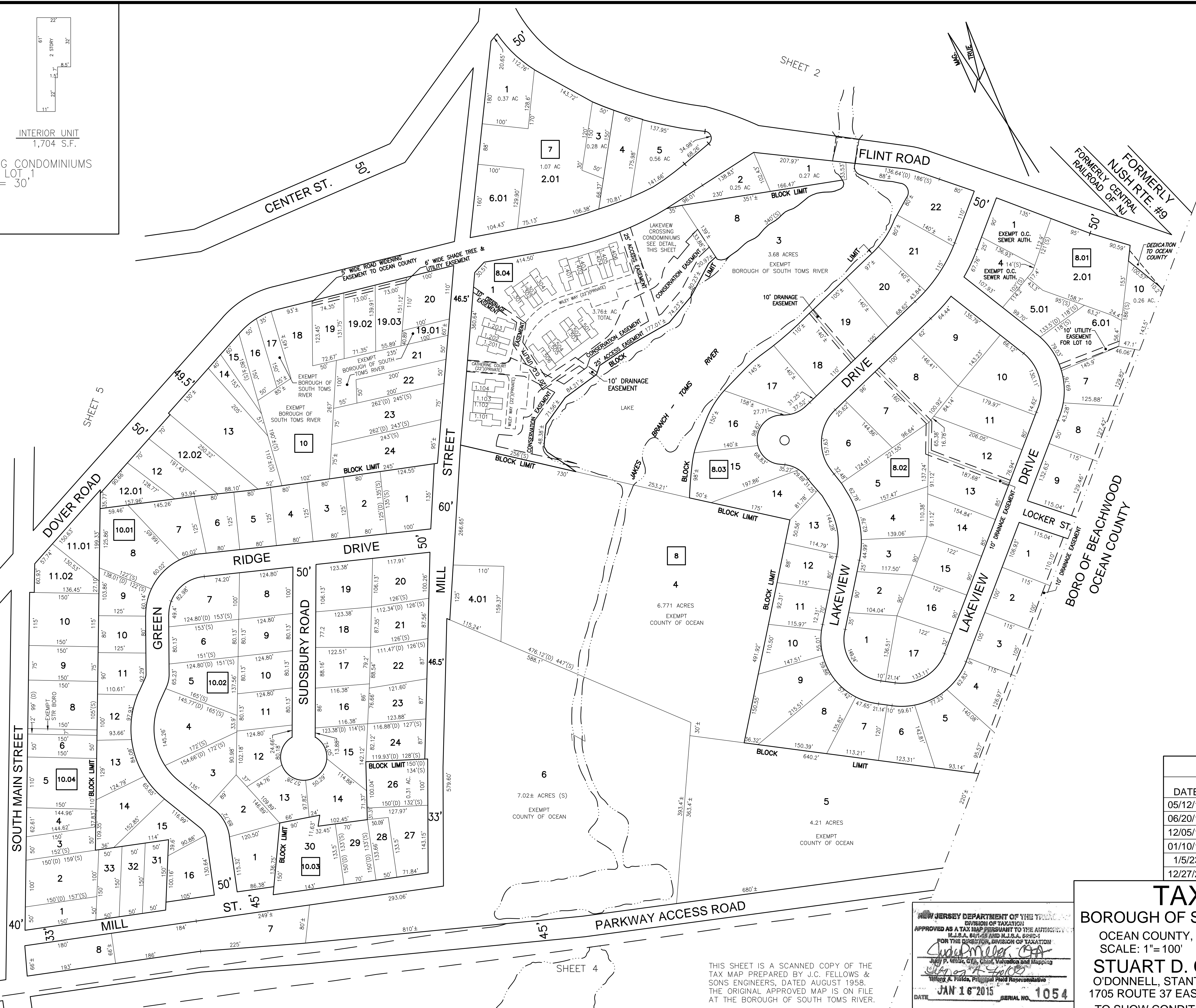
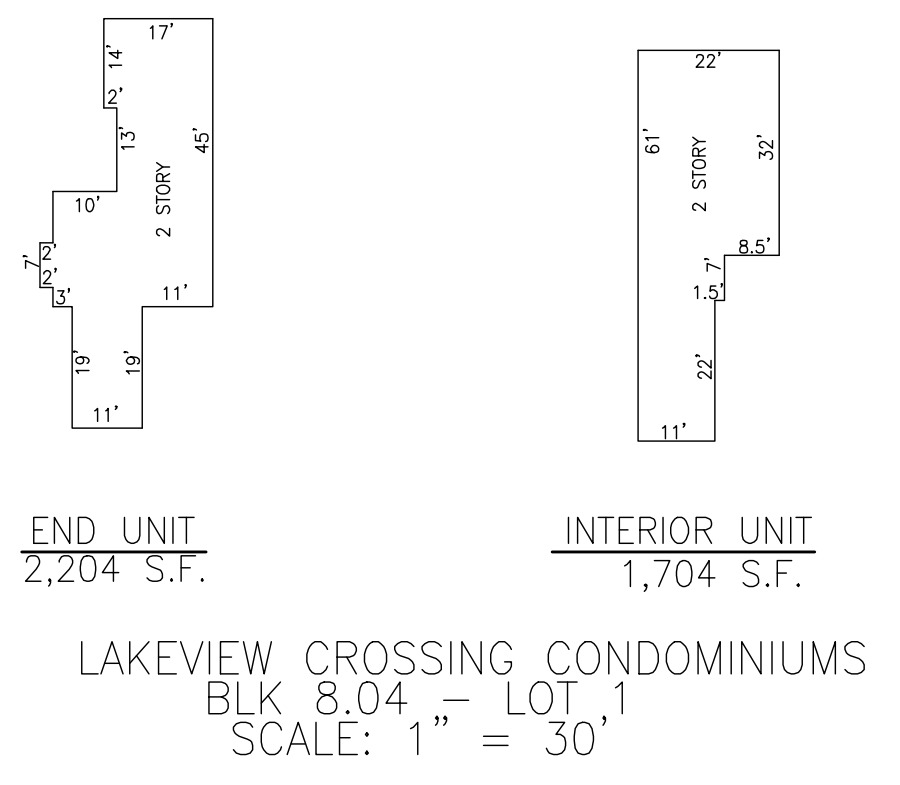
SHEET 5



THIS SHEET IS A SCANNED COPY OF THE TAX MAP PREPARED BY J.C. FELLOWS & SONS ENGINEERS, DATED AUGUST 1958. THE ORIGINAL APPROVED MAP IS ON FILE AT THE BOROUGH OF SOUTH TOMS RIVER.

NEW JERSEY DEPARTMENT OF THE TREASURY
 DIVISION OF TAXATION
 APPROVED AS A TAX MAP PURSUANT TO THE AUTHORITY OF
 N.J.S.A. 54:27-15 AND N.J.S.A. 54:27-17
 FOR THE BOROUGH OF SOUTH TOMS RIVER
Stuart D. Christie
 Chief, Valuation and Mapping
Joseph A. Florida
 Principal Field Representative
 DATE: JAN 16 2015 SERIAL NO. 1054

TAX MAP
 BOROUGH OF SOUTH TOMS RIVER
 OCEAN COUNTY, NEW JERSEY
 SCALE: 1"= 100' DECEMBER, 2010
STUART D. CHRISTIE P.L.S.
 O'DONNELL, STANTON & ASSOCIATES, INC.
 1705 ROUTE 37 EAST, TOMS RIVER, NJ 08753
 TO SHOW CONDITIONS AS OF DEC. 5, 2014



REVISIONS		
DATE	L. S. NAME	LIC. NO.
05/12/14	GLEN J. LLOYD	GS037598
06/20/14	GLEN J. LLOYD	GS037598
12/05/14	GLEN J. LLOYD	GS037598
01/10/17	STUART D. CHRISTIE	GS029345
1/5/23	JOSEPH CANADA	GS043333
12/27/23	JOSEPH CANADA	GS043333

TAX MAP
BOROUGH OF SOUTH TOMS RIVER
OCEAN COUNTY, NEW JERSEY
SCALE: 1"= 100'
DECEMBER, 2010
STUART D. CHRISTIE P.L.S.
O'DONNELL, STANTON & ASSOCIATES, INC.
1705 ROUTE 37 EAST, TOMS RIVER, NJ 08753
TO SHOW CONDITIONS AS OF DEC. 5, 2014

NEW JERSEY DEPARTMENT OF THE TREASURY
DIVISION OF TAXATION
APPROVED AS A TAX MAP PURSUANT TO THE AUTHORITY OF
P.L.S.A. 87-15 AND N.J.S.A. 87-15
FOR THE BOROUGH OF SOUTH TOMS RIVER
Judy P. White, CMA, Chief, Valuation and Mapping
Walter A. Fields, Principal Field Representative
DATE: JAN 16 2015 SERIAL NO. 1054

THIS SHEET IS A SCANNED COPY OF THE
TAX MAP PREPARED BY J.C. FELLOWS &
SONS ENGINEERS, DATED AUGUST 1958.
THE ORIGINAL APPROVED MAP IS ON FILE
AT THE BOROUGH OF SOUTH TOMS RIVER.

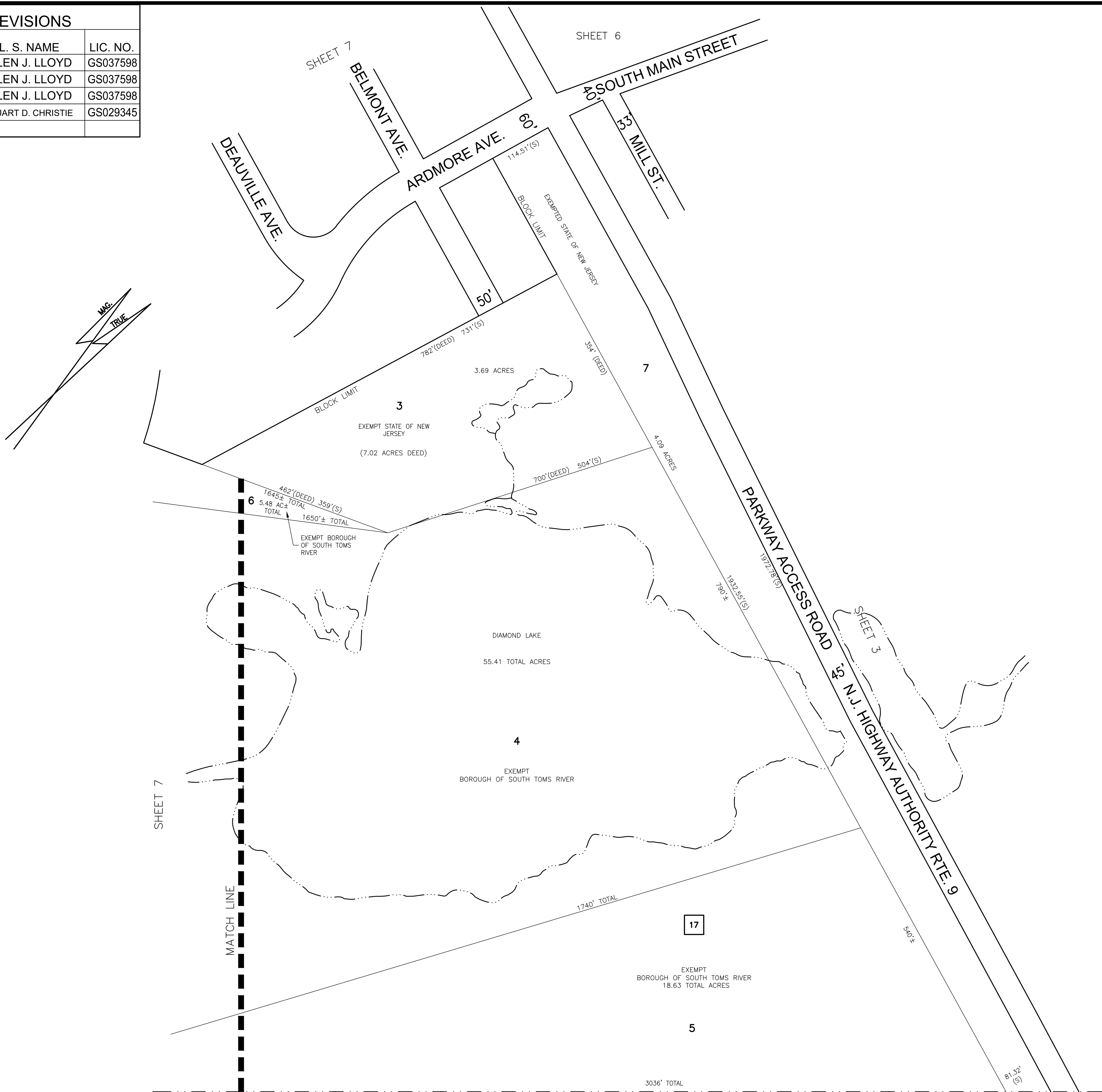
SHEET 6

SHEET 5

SHEET 2

SHEET 4

REVISIONS		
DATE	L. S. NAME	LIC. NO.
05/12/14	GLEN J. LLOYD	GS037598
06/20/14	GLEN J. LLOYD	GS037598
12/05/14	GLEN J. LLOYD	GS037598
01/10/17	STUART D. CHRISTIE	GS029345

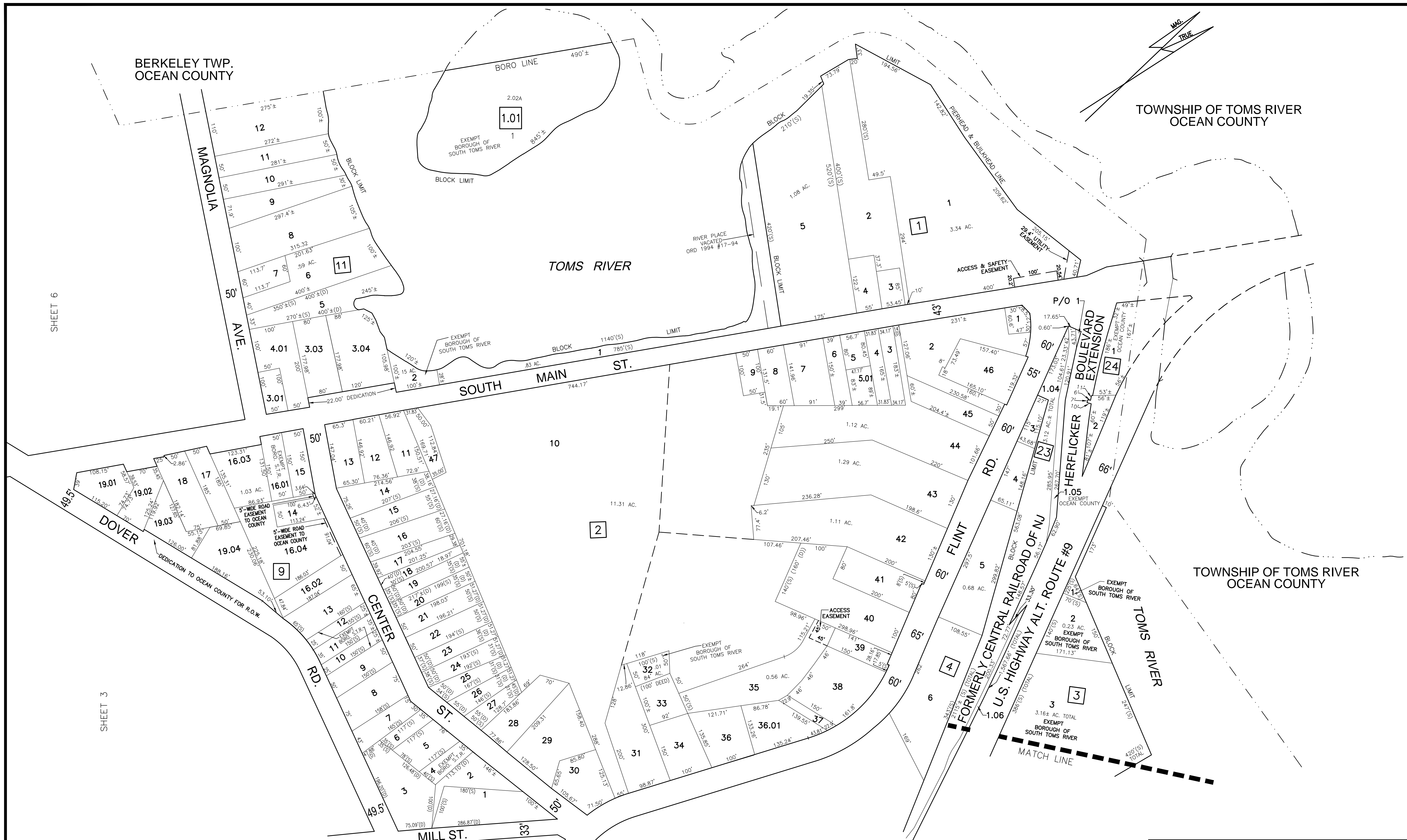


BORO OF BEACHWOOD
OCEAN COUNTY

THIS SHEET IS A SCANNED COPY OF THE
TAX MAP PREPARED BY J.C. FELLOWS &
SONS ENGINEERS, DATED AUGUST 1958.
THE ORIGINAL APPROVED MAP IS ON FILE
AT THE BOROUGH OF SOUTH TOMS RIVER.

NEW JERSEY DEPARTMENT OF THE TREASURY
DIVISION OF TAXATION
APPROVED AS A TAX MAP PURSUANT TO THE AUTHORITY OF
N.J.S.A. 54:27-15 AND N.J.S.A. 54:27-1
FOR THE DEPUTY CHIEF, DIVISION OF TAXATION
Stuart D. Christie
Judy P. Miller, C.T.S., Chief, Valuation and Mapping
Stuart D. Christie
William A. Flida, Principal Field Representative
DATE **JAN 16 2015** SERIAL NO. **1054**

TAX MAP
BOROUGH OF SOUTH TOMS RIVER
OCEAN COUNTY, NEW JERSEY
SCALE: 1"= 100' DECEMBER, 2010
STUART D. CHRISTIE P.L.S.
O'DONNELL, STANTON & ASSOCIATES, INC.
1705 ROUTE 37 EAST, TOMS RIVER, NJ 08753
TO SHOW CONDITIONS AS OF DEC. 5, 2014



REVISIONS		
DATE	L. S. NAME	LIC. NO.
05/12/14	GLEN J. LLOYD	GS037598
06/20/14	GLEN J. LLOYD	GS037598
12/05/14	GLEN J. LLOYD	GS037598
01/10/17	STUART D. CHRISTIE	GS029345
01/4/23	JOSEPH CANADA	GS043333
12/27/23	JOSEPH CANADA	GS043333

THIS SHEET IS A SCANNED COPY OF THE TAX MAP PREPARED BY J.C. FELLOWS & SONS ENGINEERS, DATED AUGUST 1958. THE ORIGINAL APPROVED MAP IS ON FILE AT THE BOROUGH OF SOUTH TOMS RIVER.

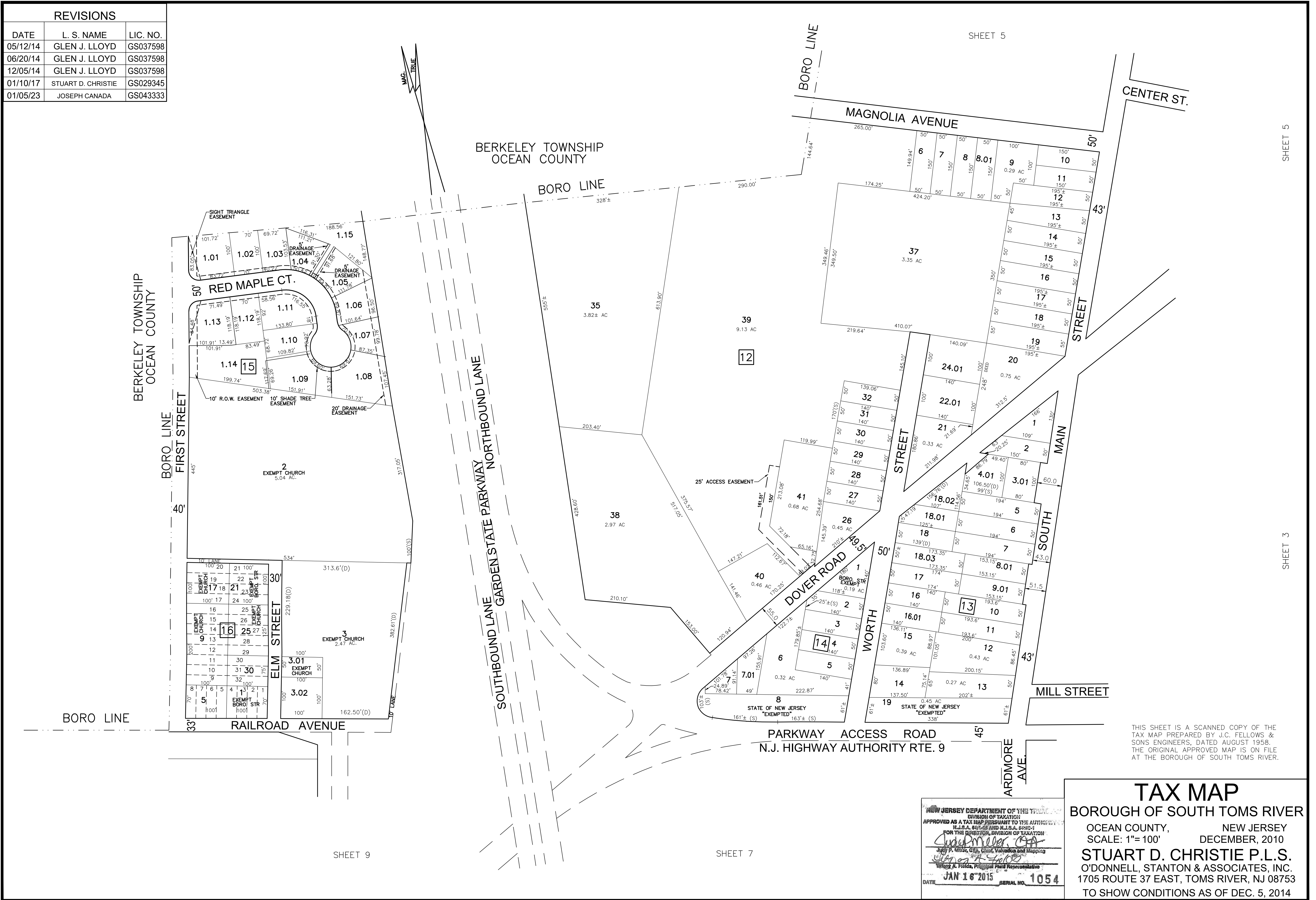
SHEET 3

SHEET 2

NEW JERSEY DEPARTMENT OF TREASURY
 DIVISION OF TAXATION
 APPROVED AS A TAX MAP PURSUANT TO THE AUTHORITY OF
 N.J.S.A. 52:27-15 AND N.J.S.A. 52:27-17
 FOR THE BOROUGH OF SOUTH TOMS RIVER
 Stuart D. Christie, P.L.S., Chief, Valuation and Mapping
 William A. Fields, Principal Field Representative
 DATE: JAN 16 2015 SERIAL NO. 1054

TAX MAP
 BOROUGH OF SOUTH TOMS RIVER
 OCEAN COUNTY, NEW JERSEY
 SCALE: 1"=100' DECEMBER, 2010
STUART D. CHRISTIE P.L.S.
 O'DONNELL, STANTON & ASSOCIATES, INC.
 1705 ROUTE 37 EAST, TOMS RIVER, NJ 08753
 TO SHOW CONDITIONS AS OF DEC. 5, 2014

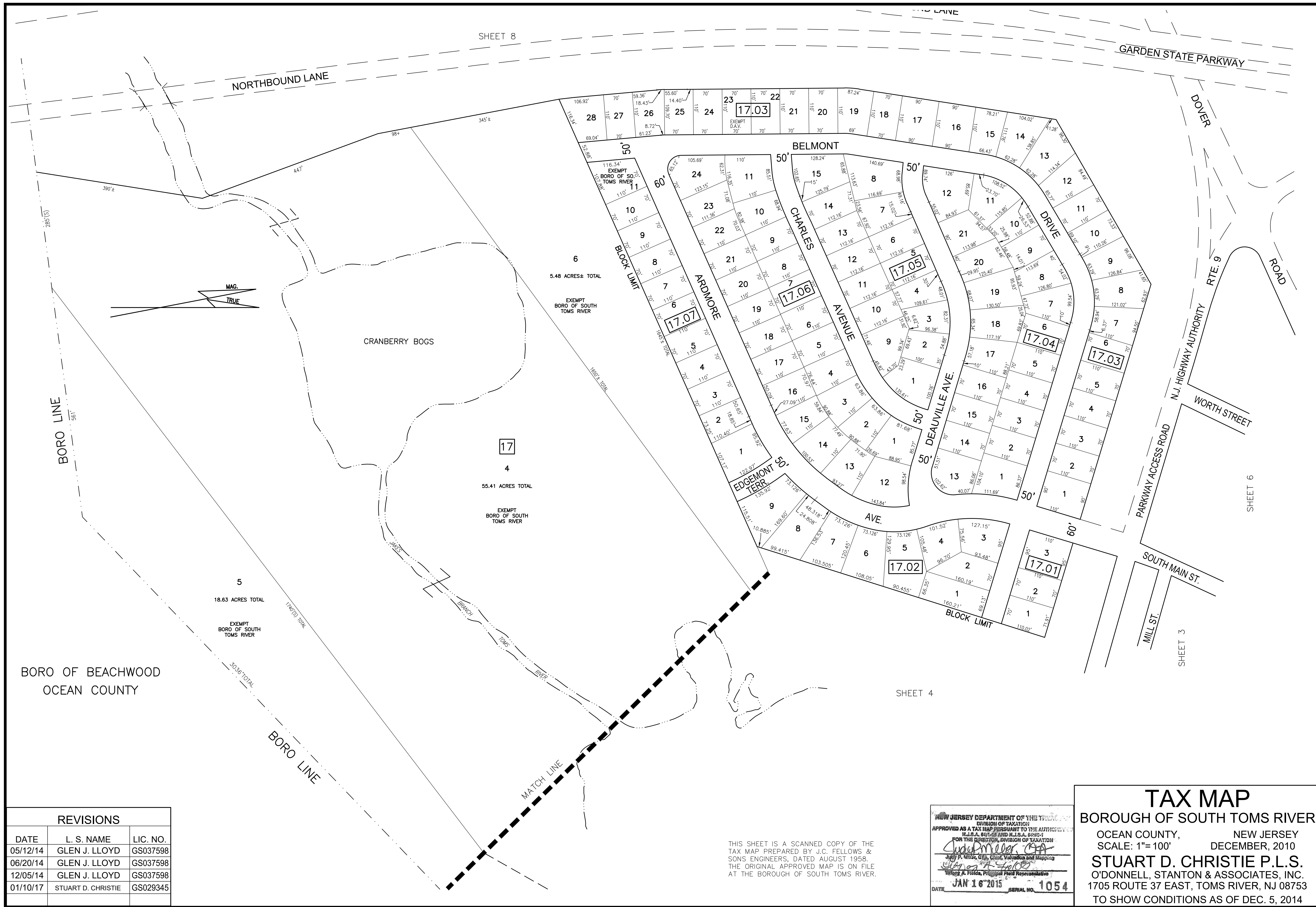
REVISIONS		
DATE	L. S. NAME	LIC. NO.
05/12/14	GLEN J. LLOYD	GS037598
06/20/14	GLEN J. LLOYD	GS037598
12/05/14	GLEN J. LLOYD	GS037598
01/10/17	STUART D. CHRISTIE	GS029345
01/05/23	JOSEPH CANADA	GS043333



THIS SHEET IS A SCANNED COPY OF THE TAX MAP PREPARED BY J.C. FELLOWS & SONS ENGINEERS, DATED AUGUST 1958. THE ORIGINAL APPROVED MAP IS ON FILE AT THE BOROUGH OF SOUTH TOMS RIVER.

NEW JERSEY DEPARTMENT OF TREASURY
 DIVISION OF TAXATION
 APPROVED AS A TAX MAP PURSUANT TO THE AUTHORITY OF
 N.J.S.A. 54:27-25 AND N.J.S.A. 54:27-27
 FOR THE BOROUGH OF SOUTH TOMS RIVER
 JUDY M. ...
 JUDY P. ...
 WILSON A. ...
 DATE JAN 16 2015 SERIAL NO. 1054

TAX MAP
 BOROUGH OF SOUTH TOMS RIVER
 OCEAN COUNTY, NEW JERSEY
 SCALE: 1"= 100' DECEMBER, 2010
STUART D. CHRISTIE P.L.S.
 O'DONNELL, STANTON & ASSOCIATES, INC.
 1705 ROUTE 37 EAST, TOMS RIVER, NJ 08753
 TO SHOW CONDITIONS AS OF DEC. 5, 2014



SHEET 8

NORTHBOUND LANE

GARDEN STATE PARKWAY

DOVER ROAD

BELMONT DRIVE

CHARLES AVENUE

ARMORE AVENUE

DEVILLE AVE.

EDGEMONT TERR.

AVE.

PARKWAY ACCESS ROAD

WORTH STREET

SOUTH MAIN ST.

MILL ST.

CRANBERRY BOGS

BORO LINE

BORO LINE

MATCH LINE

5.48 ACRES± TOTAL
EXEMPT BORO OF SOUTH TOMS RIVER

17
4
55.41 ACRES TOTAL
EXEMPT BORO OF SOUTH TOMS RIVER

5
18.63 ACRES TOTAL
EXEMPT BORO OF SOUTH TOMS RIVER

BORO OF BEACHWOOD
OCEAN COUNTY

REVISIONS		
DATE	L. S. NAME	LIC. NO.
05/12/14	GLEN J. LLOYD	GS037598
06/20/14	GLEN J. LLOYD	GS037598
12/05/14	GLEN J. LLOYD	GS037598
01/10/17	STUART D. CHRISTIE	GS029345

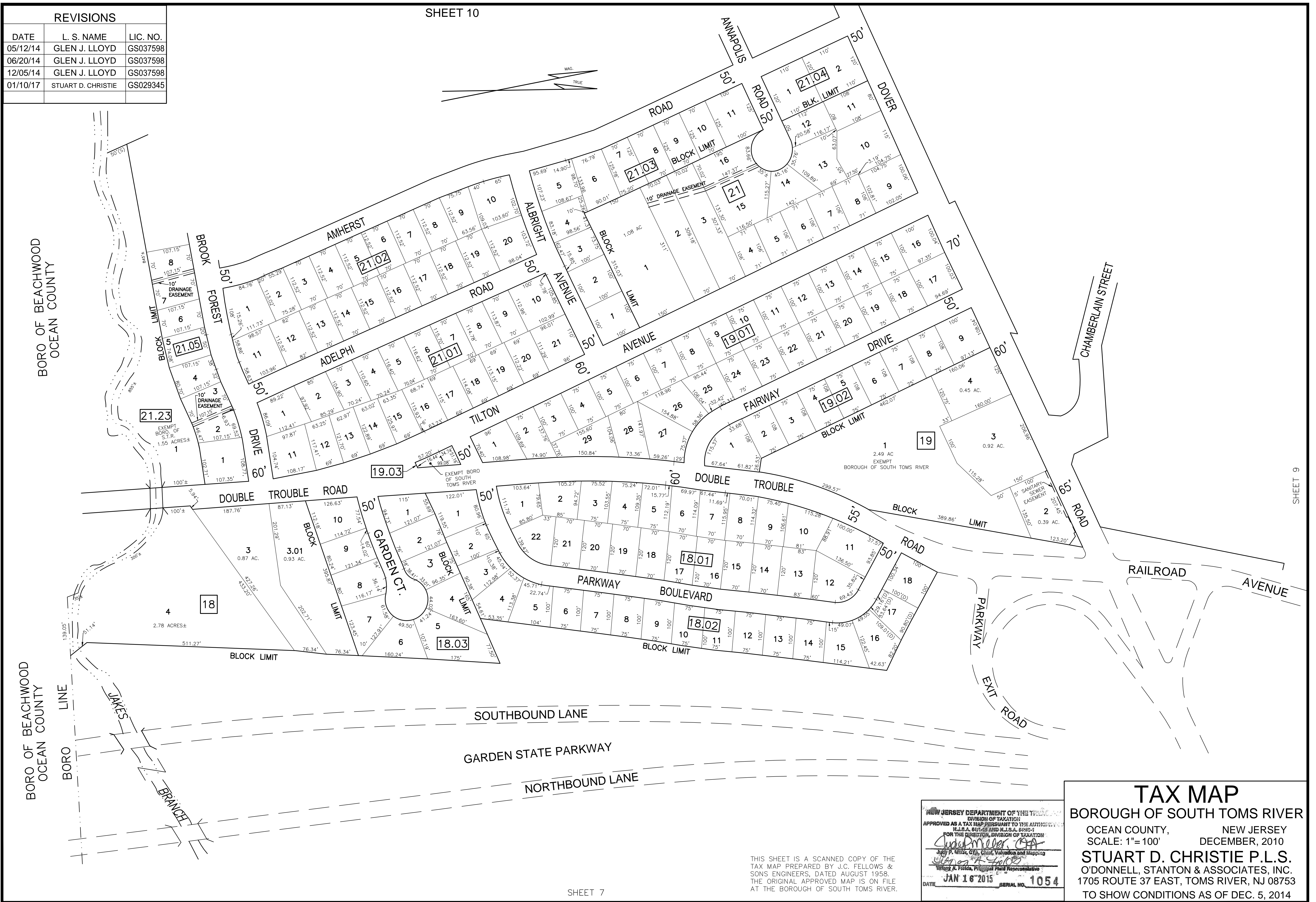
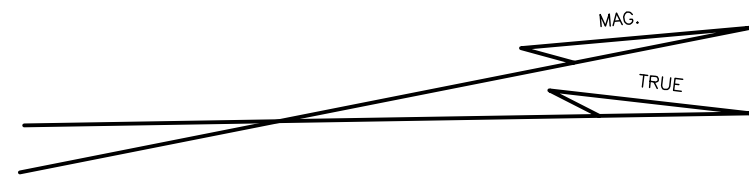
THIS SHEET IS A SCANNED COPY OF THE TAX MAP PREPARED BY J.C. FELLOWS & SONS ENGINEERS, DATED AUGUST 1958. THE ORIGINAL APPROVED MAP IS ON FILE AT THE BOROUGH OF SOUTH TOMS RIVER.

NEW JERSEY DEPARTMENT OF THE TREASURY
DIVISION OF TAXATION
APPROVED AS A TAX MAP PURSUANT TO THE AUTHORITY OF
N.J.S.A. 6:27-15 AND N.J.S.A. 6:27-1
FOR THE BOROUGH OF SOUTH TOMS RIVER
JULY P. KHORRAM, C.E., Chief, Valuation and Mapping
Walter A. Fields, Principal Field Representative
DATE: JAN 16 2015 SERIAL NO. 1054

TAX MAP
BOROUGH OF SOUTH TOMS RIVER
OCEAN COUNTY, NEW JERSEY
SCALE: 1"=100'
DECEMBER, 2010
STUART D. CHRISTIE P.L.S.
O'DONNELL, STANTON & ASSOCIATES, INC.
1705 ROUTE 37 EAST, TOMS RIVER, NJ 08753
TO SHOW CONDITIONS AS OF DEC. 5, 2014

REVISIONS		
DATE	L. S. NAME	LIC. NO.
05/12/14	GLEN J. LLOYD	GS037598
06/20/14	GLEN J. LLOYD	GS037598
12/05/14	GLEN J. LLOYD	GS037598
01/10/17	STUART D. CHRISTIE	GS029345

SHEET 10



SHEET 9

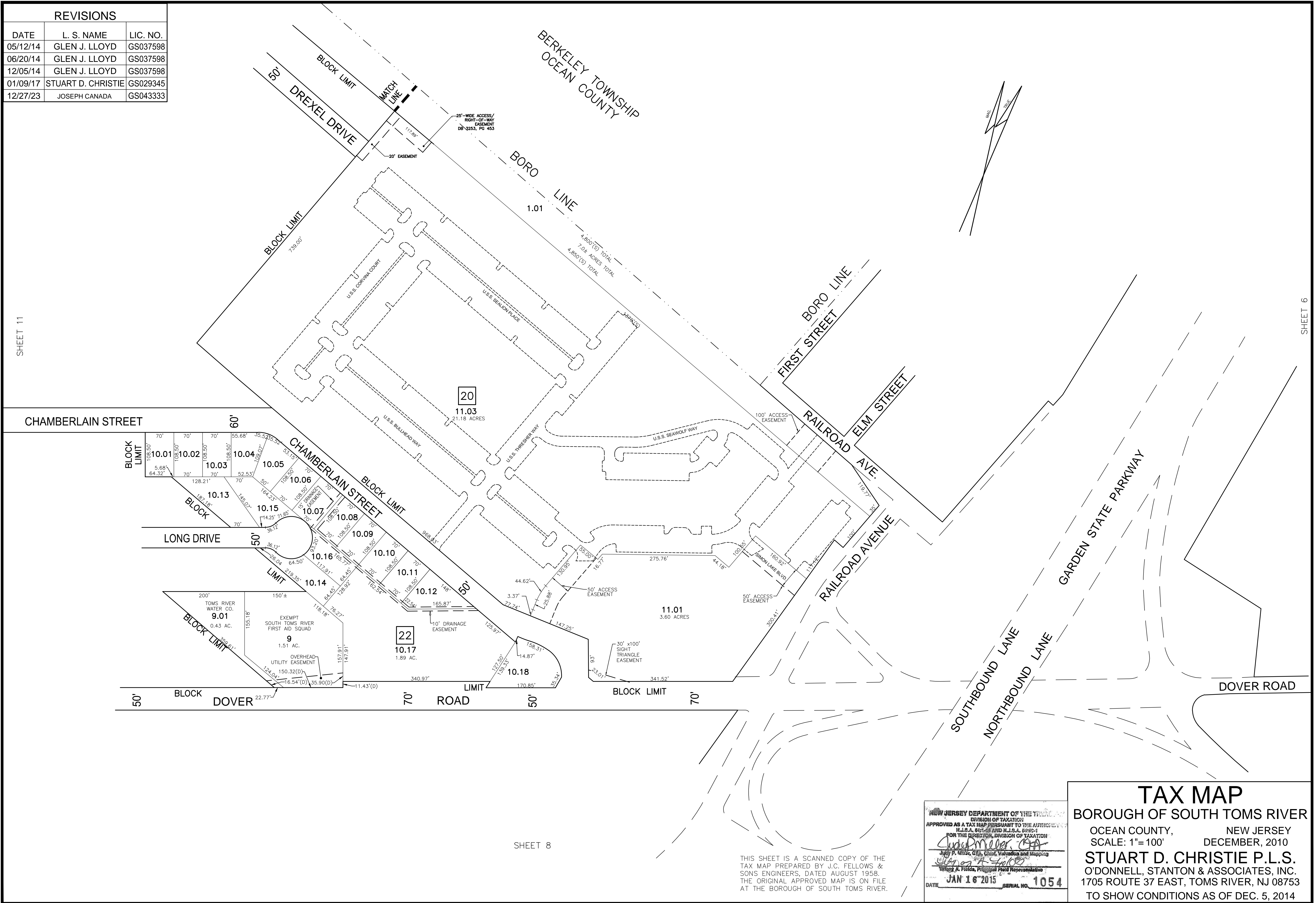
NEW JERSEY DEPARTMENT OF THE TREASURY
 DIVISION OF TAXATION
 APPROVED AS A TAX MAP PURSUANT TO THE AUTHORITY OF
 N.J.S.A. 54:27-15 AND N.J.S.A. 54:27-17
 FOR THE BOROUGH OF SOUTH TOMS RIVER
Stuart D. Christie, P.L.S.
 Chief, Valuation and Mapping
Walter A. Fields, Principal Field Representative
 DATE: JAN 16 2015 SERIAL NO. 1054

TAX MAP
 BOROUGH OF SOUTH TOMS RIVER
 OCEAN COUNTY, NEW JERSEY
 SCALE: 1"= 100' DECEMBER, 2010
STUART D. CHRISTIE P.L.S.
 O'DONNELL, STANTON & ASSOCIATES, INC.
 1705 ROUTE 37 EAST, TOMS RIVER, NJ 08753
 TO SHOW CONDITIONS AS OF DEC. 5, 2014

THIS SHEET IS A SCANNED COPY OF THE
 TAX MAP PREPARED BY J.C. FELLOWS &
 SONS ENGINEERS, DATED AUGUST 1958.
 THE ORIGINAL APPROVED MAP IS ON FILE
 AT THE BOROUGH OF SOUTH TOMS RIVER.

SHEET 7

REVISIONS		
DATE	L. S. NAME	LIC. NO.
05/12/14	GLEN J. LLOYD	GS037598
06/20/14	GLEN J. LLOYD	GS037598
12/05/14	GLEN J. LLOYD	GS037598
01/09/17	STUART D. CHRISTIE	GS029345
12/27/23	JOSEPH CANADA	GS043333



SHEET 11

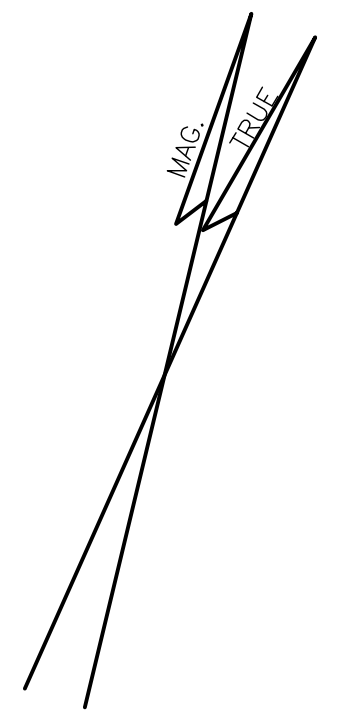
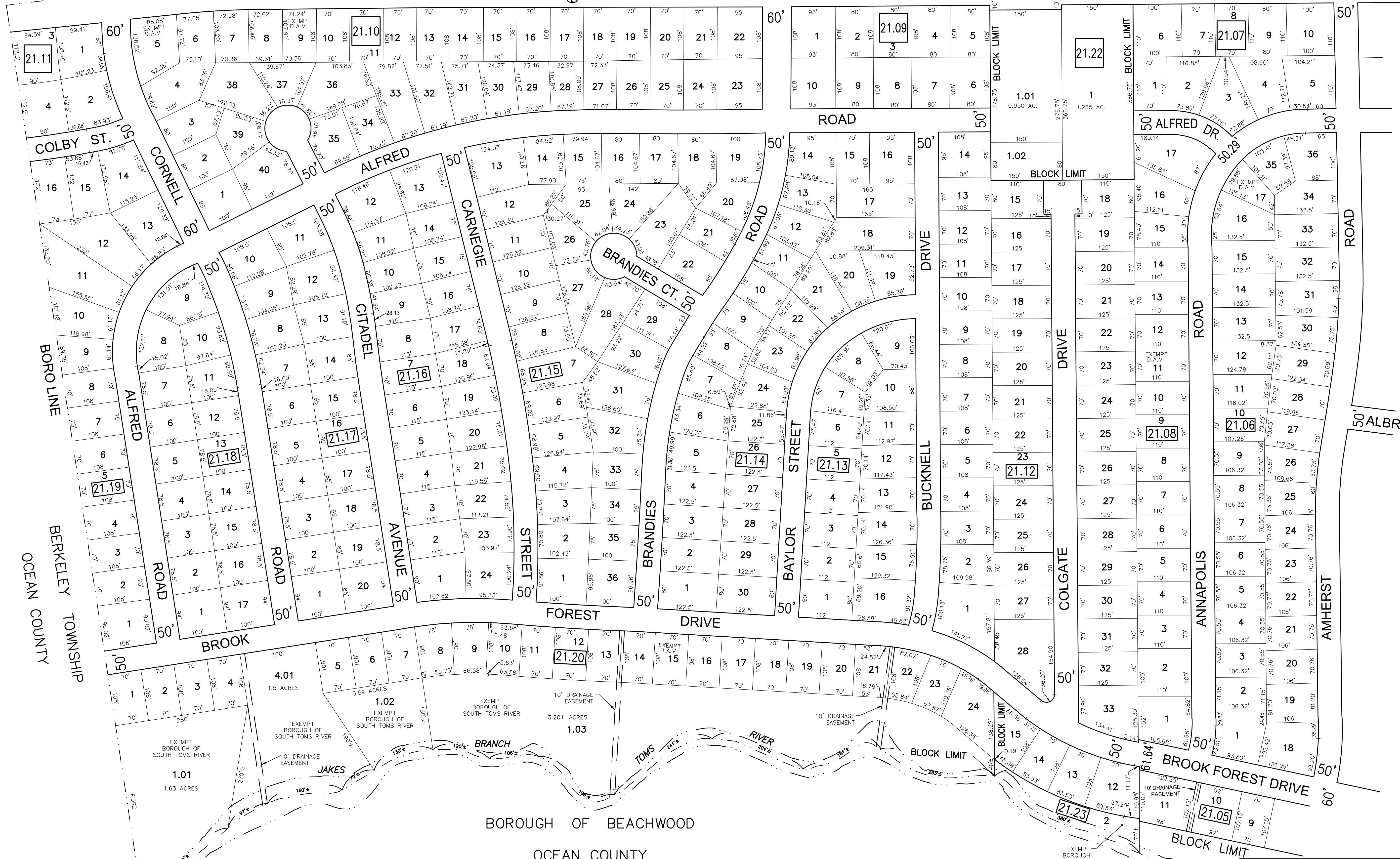
SHEET 6

SHEET 8

THIS SHEET IS A SCANNED COPY OF THE TAX MAP PREPARED BY J.C. FELLOWS & SONS ENGINEERS, DATED AUGUST 1958. THE ORIGINAL APPROVED MAP IS ON FILE AT THE BOROUGH OF SOUTH TOMS RIVER.

NEW JERSEY DEPARTMENT OF TREASURY
 DIVISION OF TAXATION
 APPROVED AS A TAX MAP PURSUANT TO THE AUTHORITY OF
 N.J.S.A. 54:27-15 AND N.J.S.A. 54:27-1
 FOR THE BOROUGH, DIVISION OF TAXATION
Stuart D. Christie
 Stuart D. Christie, P.L.S., Chief, Valuation and Mapping
Joseph A. Florida
 Joseph A. Florida, Principal Field Representative
 DATE **JAN 16 2015** SERIAL NO. **1054**

TAX MAP
 BOROUGH OF SOUTH TOMS RIVER
 OCEAN COUNTY, NEW JERSEY
 SCALE: 1"= 100' DECEMBER, 2010
STUART D. CHRISTIE P.L.S.
 O'DONNELL, STANTON & ASSOCIATES, INC.
 1705 ROUTE 37 EAST, TOMS RIVER, NJ 08753
 TO SHOW CONDITIONS AS OF DEC. 5, 2014



THIS SHEET IS A SCANNED COPY OF THE TAX MAP PREPARED BY J.C. FELLOWS & SONS ENGINEERS, DATED AUGUST 1958. THE ORIGINAL APPROVED MAP IS ON FILE AT THE BOROUGH OF SOUTH TOMS RIVER.

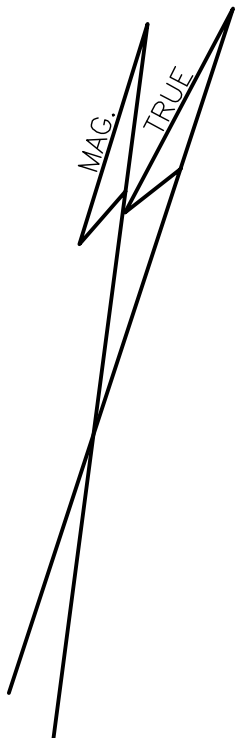
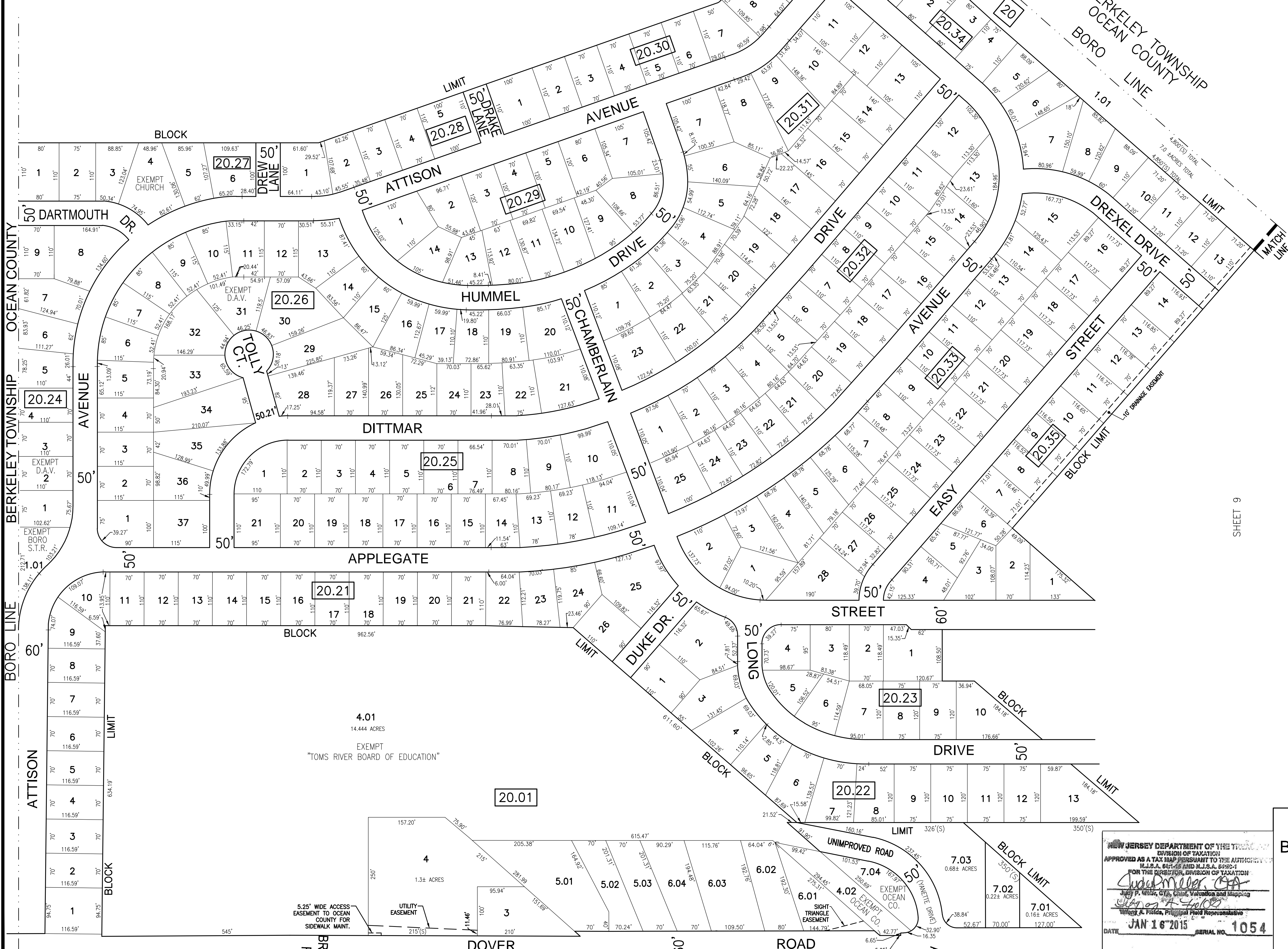
REVISIONS		
DATE	L. S. NAME	LIC. NO.
05/12/14	GLEN J. LLOYD	GS037598
06/20/14	GLEN J. LLOYD	GS037598
12/05/14	GLEN J. LLOYD	GS037598
01/10/17	STUART D. CHRISTIE	GS029345

NEW JERSEY DEPARTMENT OF TREASURY
 DIVISION OF TAXATION
 APPROVED AS A TAX MAP PURSUANT TO THE AUTHORITY OF
 P.L.S.A. 847-15 AND N.J.S.A. 84:2B-1
 FOR THE BOROUGH OF SOUTH TOMS RIVER
 JULY P. WHITE, C.T.S., Chief, Valuation and Mapping
 WILSON A. FIELDS, Principal Field Representative
 DATE **JAN 16 2015** SERIAL NO. **1054**

TAX MAP
 BOROUGH OF SOUTH TOMS RIVER
 OCEAN COUNTY, NEW JERSEY
 SCALE: 1"= 100' DECEMBER, 2010
STUART D. CHRISTIE P.L.S.
 O'DONNELL, STANTON & ASSOCIATES, INC.
 1705 ROUTE 37 EAST, TOMS RIVER, NJ 08753
 TO SHOW CONDITIONS AS OF DEC. 5, 2014

REVISIONS		
DATE	L. S. NAME	LIC. NO.
05/12/14	GLEN J. LLOYD	GS037598
06/20/14	GLEN J. LLOYD	GS037598
12/05/14	GLEN J. LLOYD	GS037598
01/10/17	STUART D. CHRISTIE	GS029345
01/05/23	JOSEPH CANADA	GS043333

SHEET 12



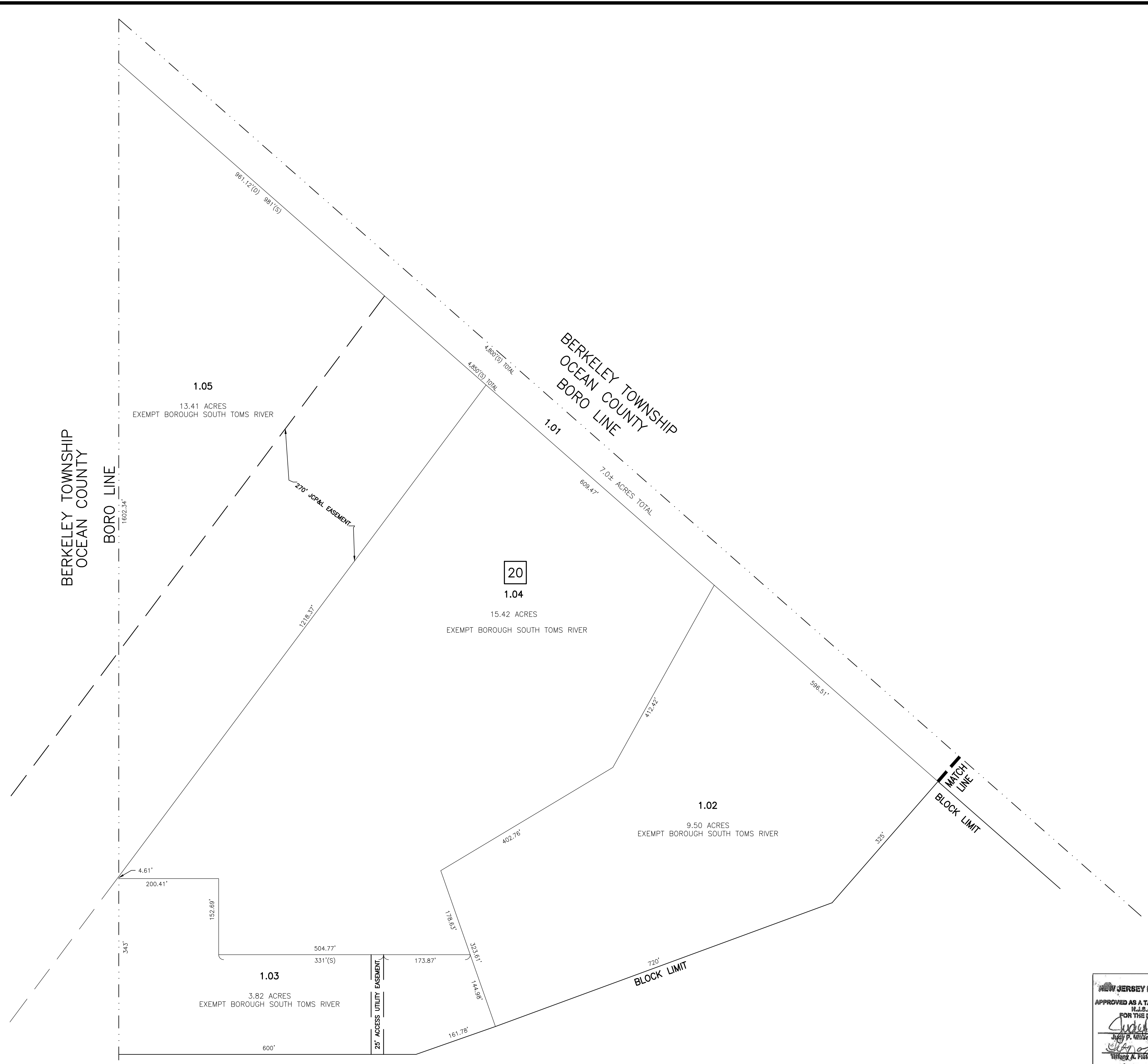
SHEET 9

THIS SHEET IS A SCANNED COPY OF THE TAX MAP PREPARED BY J.C. FELLOWS & SONS ENGINEERS, DATED AUGUST 1958. THE ORIGINAL APPROVED MAP IS ON FILE AT THE BOROUGH OF SOUTH TOMS RIVER.

TAX MAP
 BOROUGH OF SOUTH TOMS RIVER
 OCEAN COUNTY, NEW JERSEY
 SCALE: 1"=100'
 DECEMBER, 2010
STUART D. CHRISTIE P.L.S.
 O'DONNELL, STANTON & ASSOCIATES, INC.
 1705 ROUTE 37 EAST, TOMS RIVER, NJ 08753
 TO SHOW CONDITIONS AS OF DEC. 5, 2014

NEW JERSEY DEPARTMENT OF THE TREASURY
 DIVISION OF TAXATION
 APPROVED AS A TAX MAP PURSUANT TO THE AUTHORITY OF
 N.J.S.A. 52:27 AND N.J.S.A. 52:28-1
 FOR THE BOROUGH OF SOUTH TOMS RIVER
 JULY P. WHITE, C.T.S., Chief, Valuation and Mapping
 Stuart D. Christie, P.L.S., Principal Field Representative
 DATE: JAN 16 2015 SERIAL NO. 1054

REVISIONS		
DATE	L. S. NAME	LIC. NO.
05/12/14	GLEN J. LLOYD	GS037598
06/20/14	GLEN J. LLOYD	GS037598
12/05/14	GLEN J. LLOYD	GS037598
01/10/17	STUART D. CHRISTIE	GS029345



THIS SHEET IS A SCANNED COPY OF THE TAX MAP PREPARED BY J.C. FELLOWS & SONS ENGINEERS, DATED AUGUST 1958. THE ORIGINAL APPROVED MAP IS ON FILE AT THE BOROUGH OF SOUTH TOMS RIVER.

TAX MAP

BOROUGH OF SOUTH TOMS RIVER

OCEAN COUNTY, NEW JERSEY
SCALE: 1"= 100' DECEMBER, 2010

STUART D. CHRISTIE P.L.S.
O'DONNELL, STANTON & ASSOCIATES, INC.
1705 ROUTE 37 EAST, TOMS RIVER, NJ 08753
TO SHOW CONDITIONS AS OF DEC. 5, 2014

NEW JERSEY DEPARTMENT OF THE TREASURY
DIVISION OF TAXATION
APPROVED AS A TAX MAP PURSUANT TO THE AUTHORITY OF
N.J.S.A. 54:27-15 AND N.J.S.A. 54:27-1
FOR THE DEPARTMENT, DIVISION OF TAXATION

Stuart D. Christie
Stuart D. Christie, C.T.S., Chief, Valuation and Mapping

William A. Fields
William A. Fields, Principal Field Representative

DATE **JAN 16 2015** SERIAL NO. **1054**